



Majestic Albert ~ cross stitch pattern

THE STORY OF MAJESTIC ALBERT

Meet Albert

My Mom loves to antique and thrift and came across this painting a few years ago.

She's basically obsessed with it and shows everyone who comes to her house.

Her home has these huge bay windows and who is front and center on the main wall for all to see... in all his majestic glory?

Why Albert of course.

I shared this image with The Witchy Stitcher facebook group and there was a mighty need for Sir Albert. I told my Mom about his cult following and she is OVER THE MOON about it. So if you stitch up Albert please send me a photo so I can share it with her!

witchystitchart@gmail.com

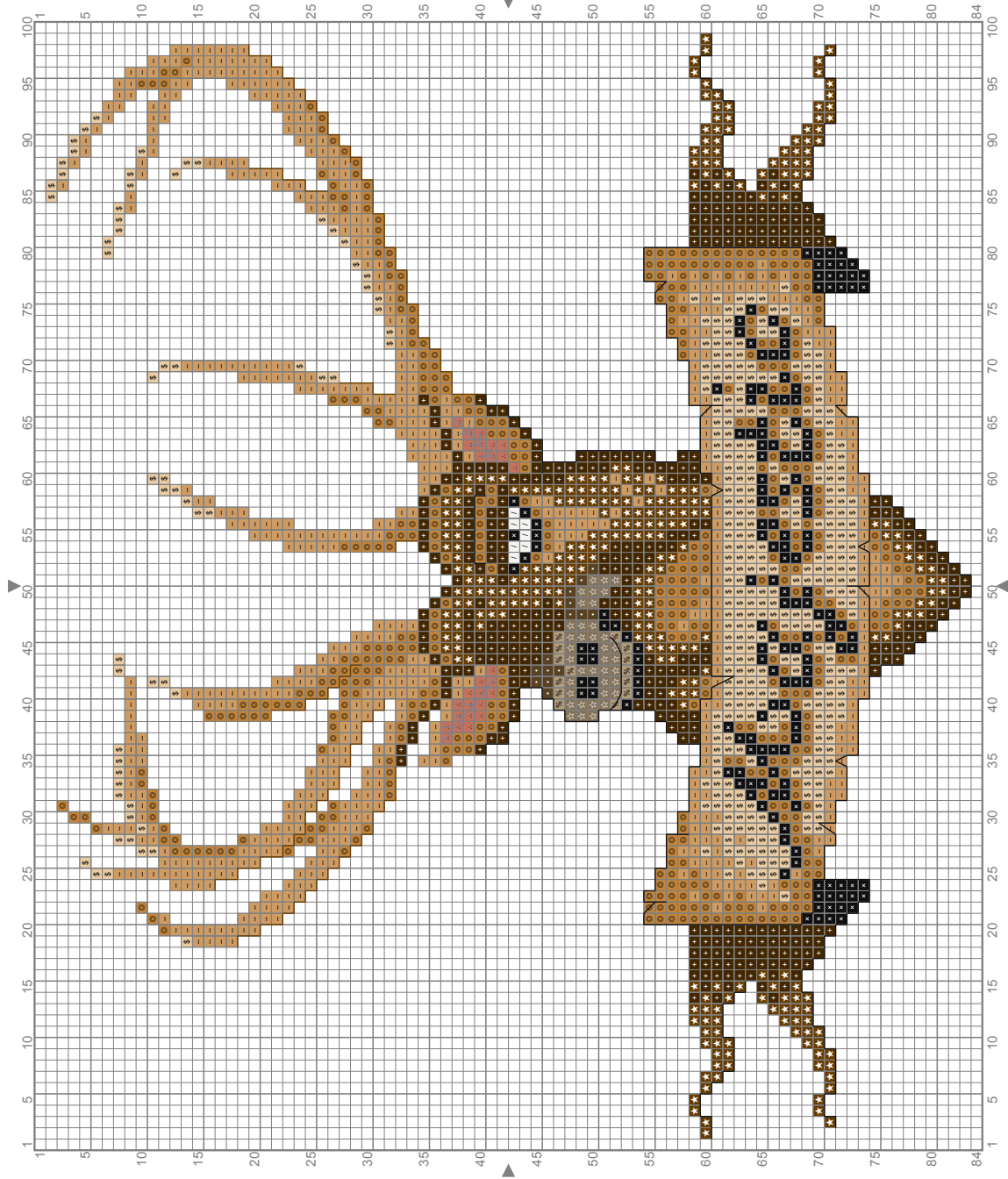


STAY MAJESTIC!

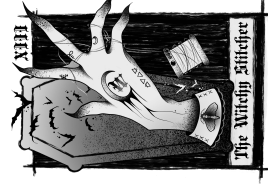
Copyright (C) 2019 Witchy Stitcher

Count Size: 100 x 84 Finished Size: 7.14 x 6.00 (inch)

+	898 (DMC)
-	436 (DMC)
=	414 (DMC)
/	3865 (DMC)
×	310 (DMC)
☆	610 (DMC)
•	839 (DMC)
★	433 (DMC)
⋯	758 (DMC)
◎	435 (DMC)
\$	738 (DMC)
%	612 (DMC)

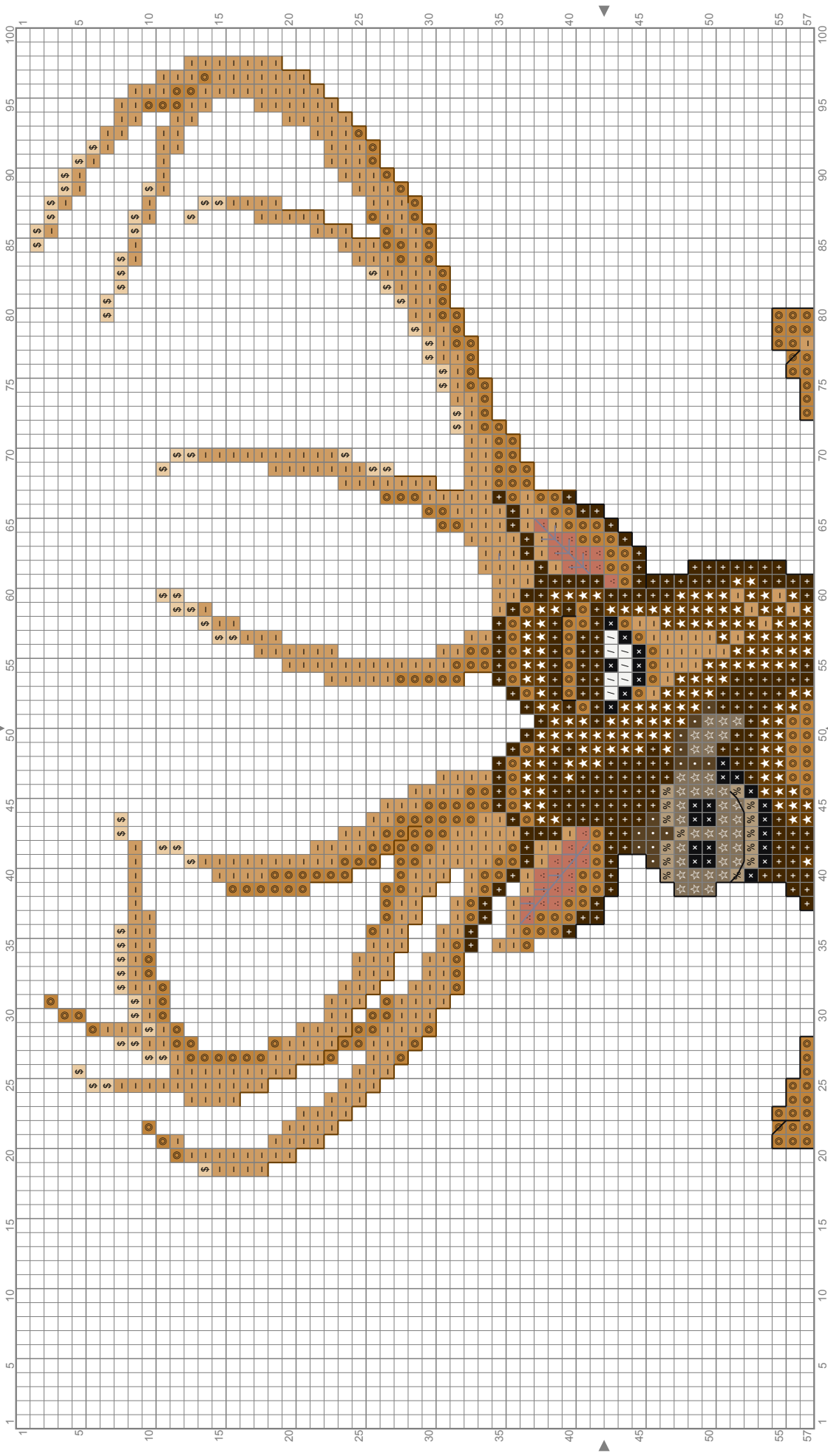


Backstitching Guide:
 Ears - DMC 414 2 strands
 Outlines - DMC 310 - 2 strands

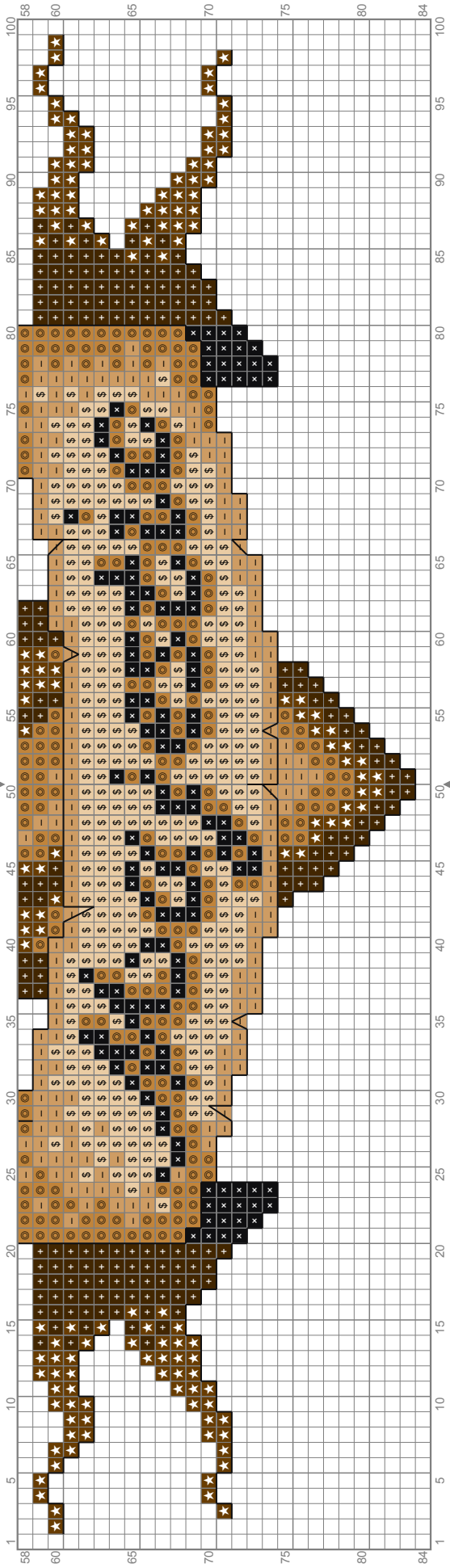


Copyright (C) 2019 Witchy Stitcher

Count Size: 100 x 84 Finished Size: 7.14 x 6.00 (inch)

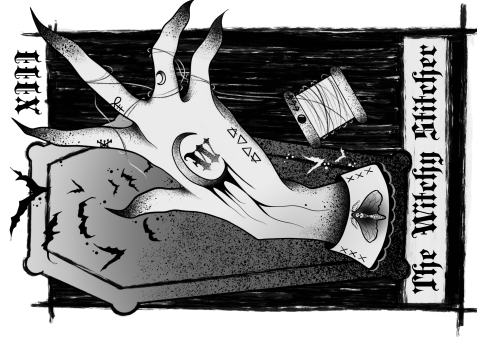


Count Size: 100 x 84 Finished Size: 7.14 x 6.00 (inch)



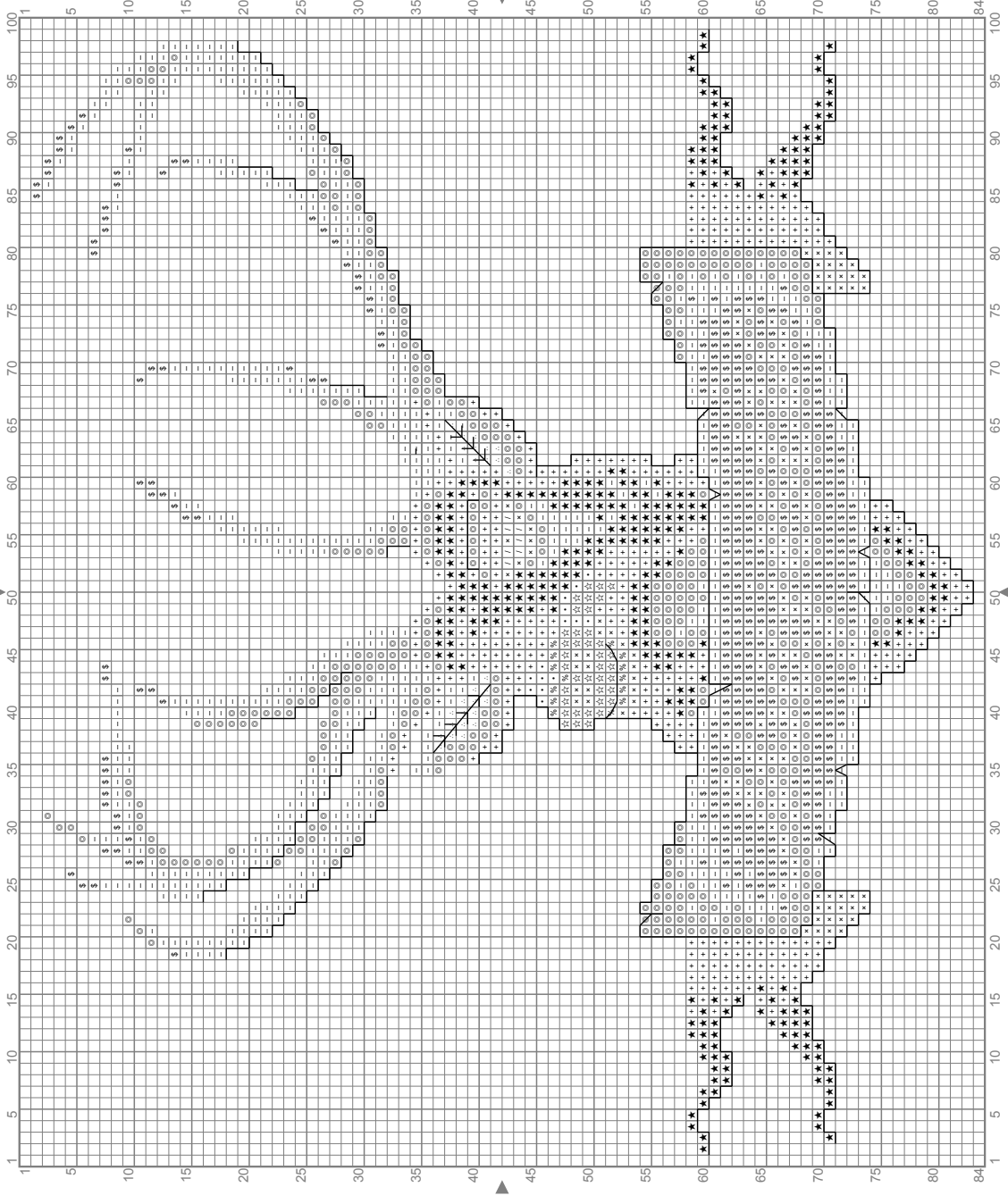
+ 898 (DMC)	- 436 (DMC)	= 414 (DMC)	/ 3865 (DMC)	x 310 (DMC)	☆ 610 (DMC)	● 839 (DMC)	★ 433 (DMC)
∴ 758 (DMC)	◎ 435 (DMC)	\$ 738 (DMC)	% 612 (DMC)				

Backstitching Guide:
 Ears - DMC 414 2 strands
 Outlines - DMC 310 - 2 strands

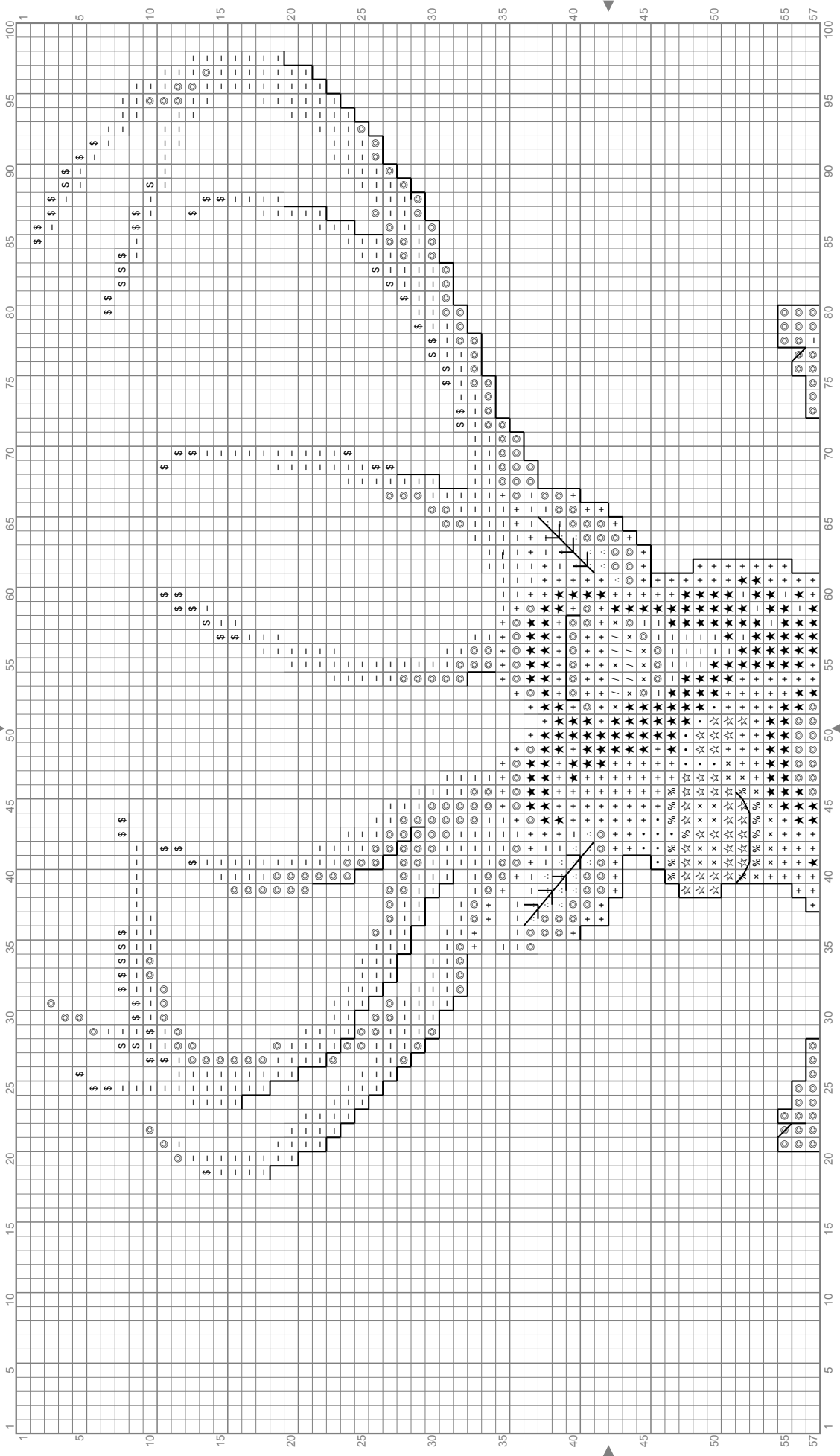


Copyright (C) 2019 Witchy Stitcher

Count Size: 100 x 84 Finished Size: 7.14 x 6.00 (inch)

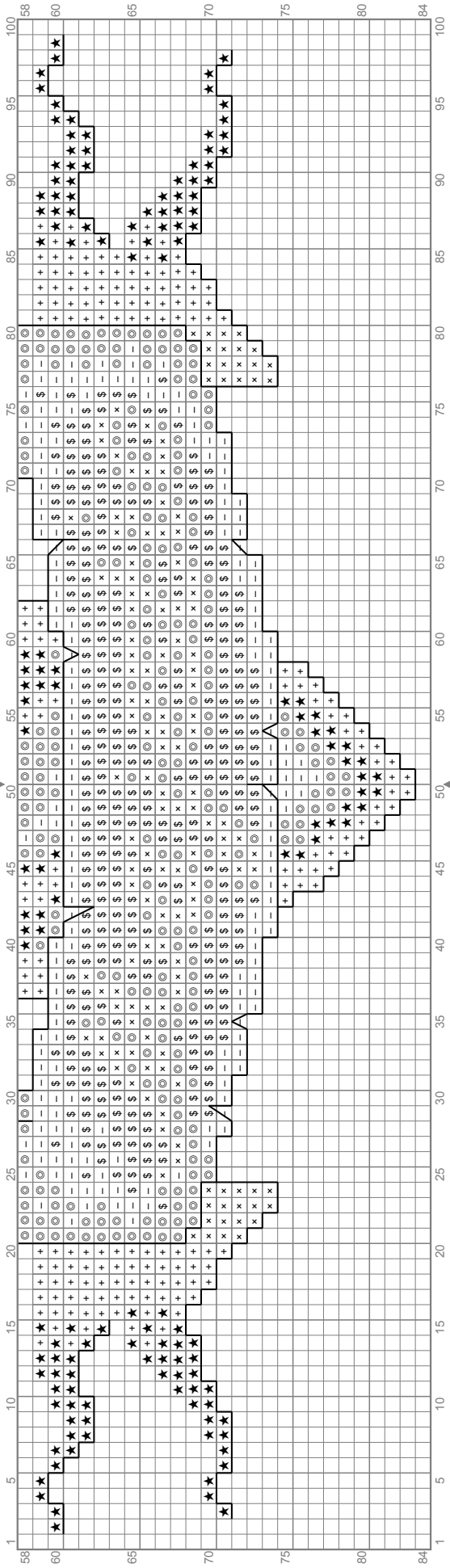


Count Size: 100 x 84 Finished Size: 7.14 x 6.00 (inch)



Copyright (C) 2019 Witchy Stitcher

Count Size: 100 x 84 Finished Size: 7.14 x 6.00 (inch)



+ 898 (DMC)	- 436 (DMC)	= 414 (DMC)	/ 3865 (DMC)	x 310 (DMC)	☆ 610 (DMC)	● 839 (DMC)	★ 433 (DMC)
∴ 758 (DMC)	◎ 435 (DMC)	\$ 738 (DMC)	% 612 (DMC)				

Backstitching Guide:
 Ears - DMC 414 2 strands
 Outlines - DMC 310 - 2 strands

